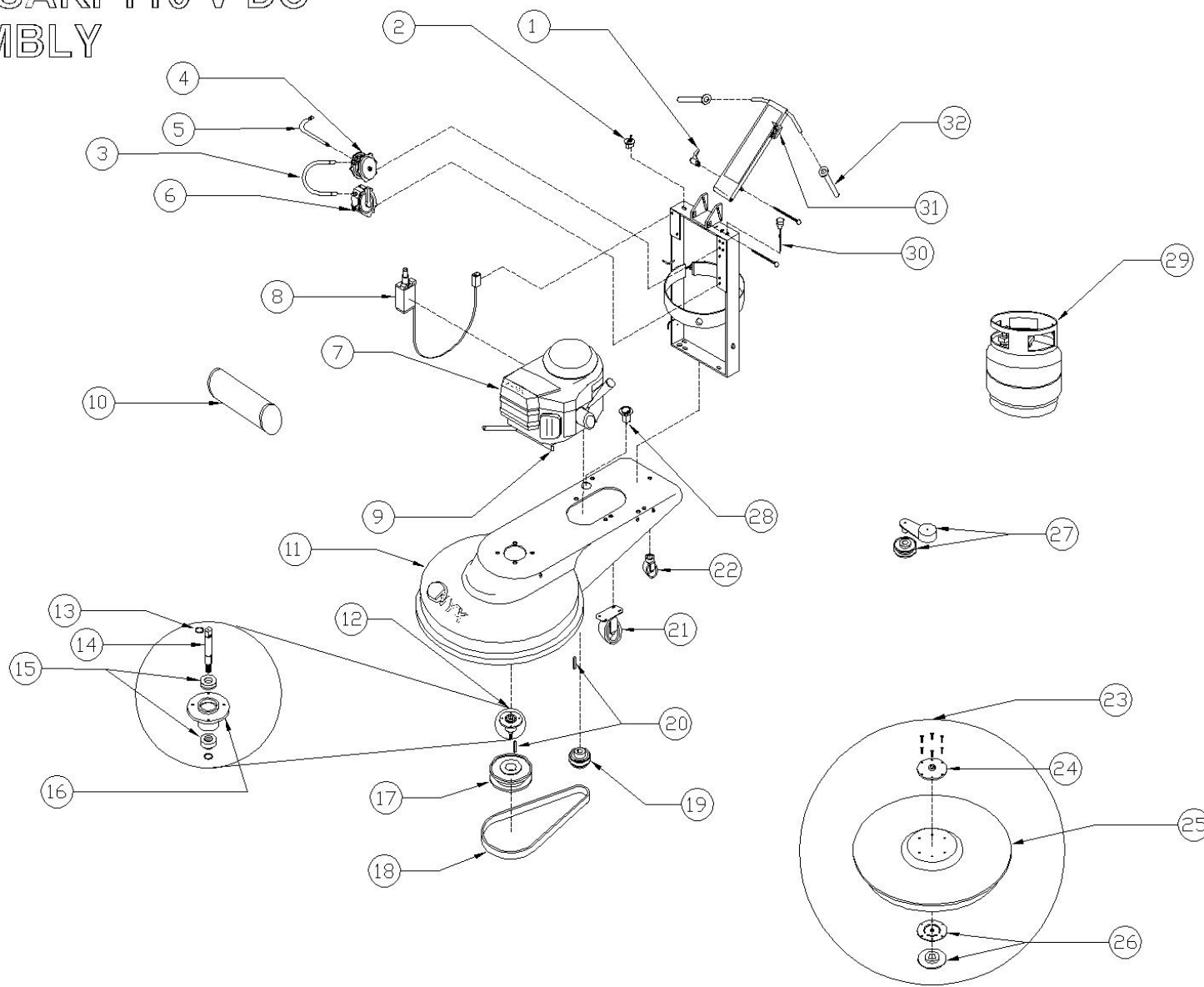


# KAWASAKI 110 V DC ASSEMBLY





## KAWASAKI 110 VOLT DC BUFFER

REF #	PART #	PART DESCRIPTION	QTY
1	W4020	Bottle Carrier Adjustment Handle	1
2	W1309	Kill Switch	1
3	W2649-A	110 V Fuel Hose w/ Swivel	1
4	N00-0125A (W2607)	Vaccum Fuel Lock-off	1
5	W2649-B	14" Hose Assembly w/ Regulator Valve	1
6	N-51-2A-C-3.0 (W2606)	Regulator	1
7	W3100	13 Hp Kawasaki Twin Engine	1
	W3101	17 Hp Kawasaki Twin Engine	
8	K21163-7012	110 Volt DC Starter	1
9	W3225	17 Hp Kawasaki Manifold	1
	W3235	13 Hp Kawasaki Manifold	
10	W3260	Muffler	1
	W3220	Cat	1
11	W5021	21" Deck	1
	W5024	24" Deck	
	W5027	27" Deck	
12	W1066A	Front Bearing Assembly	1
13	F68019	Snap Ring	2
14	W1007	Shaft	1
15	W1055	Bearing	2
16	W1060	Aluminum Housing	1
17	W2060	6" Pulley	1
	W2075	7.5" Pulley	
	W2085	8.8" Pulley	
18	WB43	43" Belt	1
	WB51	51" Belt	
19	W2035	3.5" Pulley	1
20	F47913	Key stock	2
21	W4211	Standard Wheel Bracket	2
	W4220	Rubber Wheel 6 x 1.5"	2
	W4221	Axle Kit for W4220	2
22	W4240	Rear Caster	1
23	W1510A	21" Standard Pad Driver	1
	W1511A	27" Standard Pad Driver	
	W1512A	24" Standard Pad Driver	
24	W1011	Standard Pad Driver Shaft Plate 5"	1
25	W1510	21" Flex Lok Riser	1
	W1511	27" Flex Lok Riser	
	W1512	24" Flex Lok Riser	
26	W1501	Pad Driver Center-Lok 3"	1
27	W1101	Fenner Rotary Tensioner	1
28	W4302	Hour Meter	1
29	W2502	Propane Tank 80% Steel	1
30	W4134	Choke Cable 48"	1
31	W4110	Throttle Cable 53"	1
32	W4050	Hand Grip	2